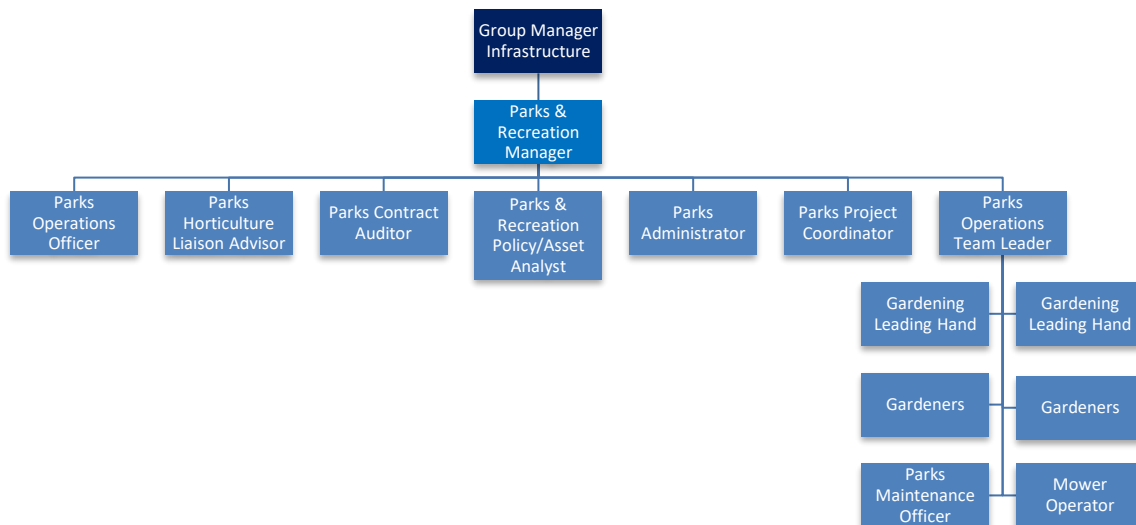


## Position Description: Mower Operator

<b>Business Group</b>	Infrastructure
<b>Reports To</b>	Parks Operations Team Leader
<b>Direct Reports</b>	Nil
<b>Date</b>	September 2024
<b>Budget Responsibility</b>	Nil
<b>Financial Delegation</b>	Nil

## Business Group Structure



## Business Group Purpose

The Infrastructure Group encompasses the areas of the Drainage & Water, Land Transport, Parks & Recreation, Development and Waste Management Units at the Timaru District Council. The Group plays a key role in delivering core services to the community, while leading and implementing the Infrastructure Strategy across the District. This Group will be responsible for the design and implementation of strategy and programmes of work which

align with the strategic priorities and Long Term Plan objectives of the Council. A key focus of the Group is to ensure infrastructure services promote the social, economic, environmental and cultural wellbeing of Timaru’s communities today and in the future.

### **Purpose of the Position**

The Mower Operator position is responsible for direct in-house maintenance of Council’s gardens, parks, landscapes and other greenspaces. This hands-on position will work with as part of the team to upkeep the quality and beauty of the greenspaces around the Timaru District.

### **Key Relationships / Customers**

<b>External</b>	<b>Internal</b>
Members of the public	Gardening Teams
Contractors	Parks & Recreation Manager
Community Groups	Parks & Recreation Team
Horticulture Suppliers	Infrastructure Staff
Hardware Suppliers	All TDC Staff

### **Position Responsibilities**

Your general duties include those outlined in this position description and may be reviewed and updated from time to time in consultation with you. You will also be required to undertake any other duties that are within your ability to perform, if asked to do so.

### **Greenspace and Landscape Maintenance**

1. Maintain lawns and grass areas using a powered lawnmower, ride-on mower, or hand-held line trimmer.
2. Ensure mower blades are kept sharp for efficient and effective operation.
3. Ensure mowing or line trimming areas are free from debris that can damage or cause damage to mowers or other property in the area of operation.

4. Ensure a safe operating distance is used when operating ride-on mowers near the public (2 x Mowing Deck Width Minimum).
5. Use powered edgers to maintain clean edges around footpaths, fences, structures and various garden beds.
6. Operate all powered gardening and landscaping tools in a safe manner.
7. Keep the parks, gardens, and greenspaces within your control well-maintained.
8. Carry out any rubbish collection, fertilising, weeding, spraying, and irrigating of amenity areas as required.
9. Support and assist gardeners with the preparation, planting and caring of annual bedding plants.
10. Carry out any minor irrigation repairs as required.
11. Monitor and report on various lawns, grass areas and other greenspaces about plant growth and plant health, drainage, and surface levels with the view of identifying problem areas.
12. Handle and apply agrichemicals and fuels in a safe manner.
13. Undertake any minor tree maintenance in line with good horticultural practices to ensure clear and efficient mowing.
14. Undertake all regular maintenance checks and servicing of all mower equipment, power and hand tools used in the course of your duties.
15. Keep informed of and up to date with gardening and turf maintenance techniques.
16. Carry out other horticultural work as needed.
17. Assist the Parks Maintenance Officer when required.

### **Teamwork**

18. Coordinate daily activities with Leading Hand and team members to ensure work can be effectively spread through the team.
19. Coordinate activities with other gardening teams to ensure effective coverage of work and to avoid double work.
20. Share knowledge of horticulture and turf with others and support the training of new gardeners.

## General

21. Provide a good public image and be polite and courteous to members of the public.
22. Actively engage in setting own goals and objectives.
23. Assist with other duties as reasonably required by the Parks Operations Team Leader.
24. Assist with monitoring all Parks and Recreation service delivery by actively observing operations, including from a Health and Safety perspective.
25. Actively contribute to health, safety and wellbeing through working safely, taking responsibility for keeping self and colleagues free from harm, following SOPs, reporting all incidents and hazards promptly and knowing what to do in the event of an emergency.
26. Take responsibility for ensuring Council information, data and records are stored with appropriate accessibility in designated systems, using processes and tools as described in the current Information Management Policy
27. Be actively involved in Civil Defence Emergency Management when required.
28. Live the COSI values; Customer Focus, One Team, Success and Integrity and consciously support a team culture that is consistent with the overall organisation's values and above the line behaviours.
29. Commitment to the principles of the Treaty of Waitangi

## Formal Qualifications / Training / Experience

<b>Minimum Qualification</b>	NCEA Level 2 or equivalent
<b>Desired Qualification</b>	NZQA Level 3 qualification in horticulture
<b>Minimum Experience</b>	2 years of relevant experience in related role
<b>Desired Experience</b>	3+ years of relevant experience in gardening or horticulture roles

## Key Competencies / Skills / Knowledge

- Demonstrated skills in the safe use and operation of ride-on mowers and tractors.
- Demonstrated skills in using powered hand mowers, line trimmers, and edgers .
- Demonstrate good situational awareness and observational skills while operating mowers in public spaces.

- Ability to operate power tools safely.
- Ability to work on weekends on a rostered basis.
- Have a general understanding of horticulture and how to care for various plants, especially grass, found in the South Canterbury region.
- Hold, or work towards holding a horticulture or turf qualification.
- Sound understanding of the Health and Safety at Work Act 2015.
- Ability to undertake agrichemical spraying safely.
- Have attention to detail and the technical ability to handle various plants.
- Ability to work well as part of a team, yet also conscientiously work unsupervised.
- Be capable of working in variable weather conditions.
- Have good time management skills.
- Have basic computer skills.
- Be physically fit and able to work on knees, walk in excess of 5 km per day, and lift loads of 5 kg.
- Have a current full driver's licence.
- Wheels driver's licence endorsement would be preferable.
- Great sense of humour and work ethic.
- High level of honesty, integrity, confidentiality and a trustworthy manner.

---

**Parks and Recreation Manager**

---

**Mower Operator**

---

**Date**

---

**Date**