

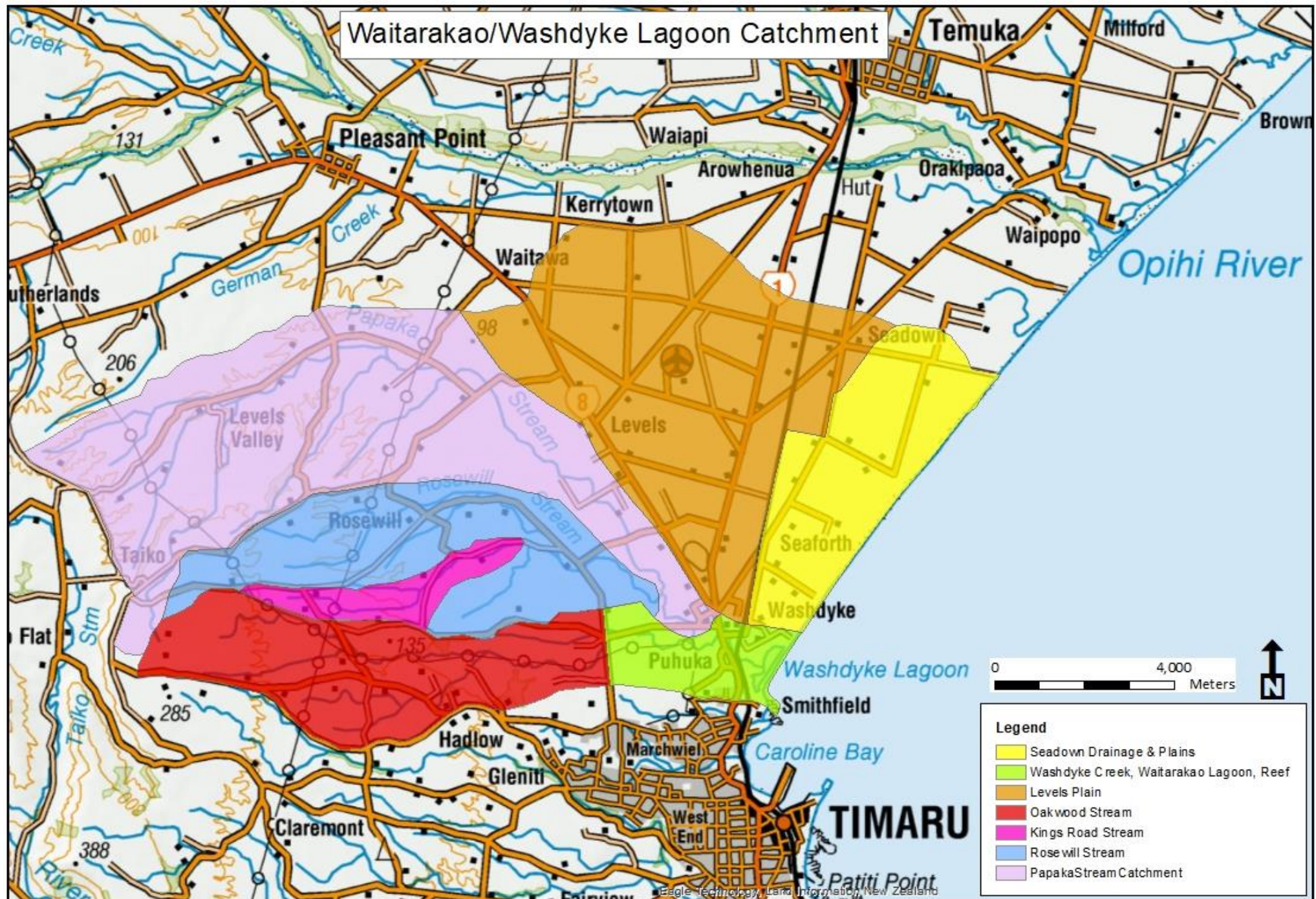
Our Waitarakao draft strategy Community feedback period



**With your help
we've made a plan**



Waitarakao/Washdyke Lagoon Catchment



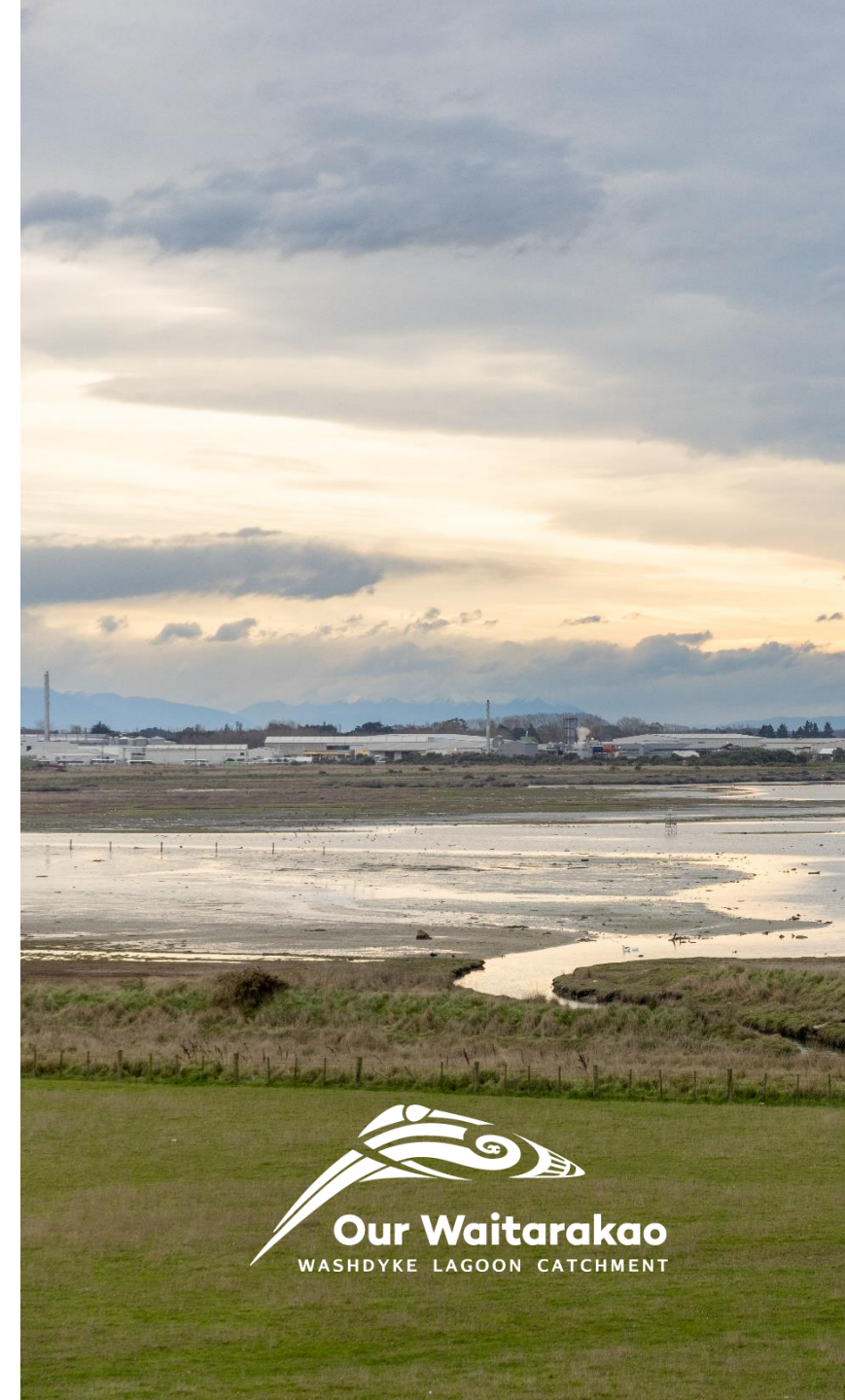
0 4,000 Meters

- Legend**
- Seadown Drainage & Plains
 - Washdyke Creek, Waitarakao Lagoon, Reef
 - Levels Plain
 - Oakwood Stream
 - Kings Road Stream
 - Rosewill Stream
 - Papa ka Stream Catchment

What's the draft strategy about?

The Waitarakao Washdyke Lagoon catchment draft strategy (Our Waitarakao), outlines the actions needed to ensure a healthy future for the Waitarakao Washdyke Lagoon catchment.

It includes five overall outcomes, which each have objectives, first steps and ongoing actions.



Outcome 1 – Ecological restoration

For the lagoon itself – a two-prong approach

Work toward extending the life of the lagoon for the maximum feasible time

Protect, restore, enhance the remaining catchment in order to provide “alternatives” for the life that uses and exists within the lagoon.

Overall Approach – the first years

Establish a baseline of activity that enables manageable, incremental but sustainable changes through time – year on year improvement.

Simultaneously scope and cost significant adaption options – life of lagoon, form of lagoon, alternative sites.

Target next LTP cycle for progressing larger change options.

What kind of activities

- Community driven and co-investment
 - Expand and enhance pest trapping – working with predator free nz
 - Initiate restoration plantings, pest removal etc on a range of accessible land
 - Community initiatives and educational visits
 - Researchers and monitoring
- Mostly agency led
 - Investigation, scoping, costing



Outcome 2 – Mahika kai

While recognised as its own important outcome – it is essentially reliant on the achievement of other outcomes around ecological restoration, education and access.

What kind of activities – the first years

Ensuring all restoration works:

Consider, include and where possible maximise mahika kai species

Target for restoration the habitat of key mahika species

Develop and access plan for the catchment which includes access for mana whenua and mahika kai

Inclusion of mana whenua in education initiatives, signage, information forums etc.

Learn more about the coastal reef environment

Establishing catchment health monitoring (testing kai, water quality etc).



Outcome 3 – Community interaction with catchment

We want to appropriately reconnect South Canterbury and particularly Timaru to its nearest significant natural environment.

What kind of activities – the first years

Maintenance and ongoing improvement of online catchment information resources.

Catchment access plan.

Ensuring when opportunities arise – e.g. coastal stopbank retreat or investigation into form of the lagoon – access is part of consideration.

Consider any possible connections to active transport network

Advocate for improved connections between Washdyke business in particularly and Timaru etc.



Outcome 4 – Community Involvement

We want the wider community to take part and feel and ownership over this catchment and its outcomes. We need co-investment of resources to succeed.

What kind of activities – the first years

Ensure communication with targeted groups interested in and participating in activities within the catchment.

Communicate project activities past, present and future clearly to the community – working on an initial platform for this.

Prioritise the establishment of ongoing relationships and regular connections.



Outcome 5 – Resilience to natural hazards

General Approach at the Coast

Assist the retreat and reconstruction of coastal defences (project under initiation).

Use the period of relative protection provided to develop a long-term coastal adaption plan with industry and other coastal landowners in recognition that the space for further stopbank retreat and the lagoon to migrate will not be their “next time”.

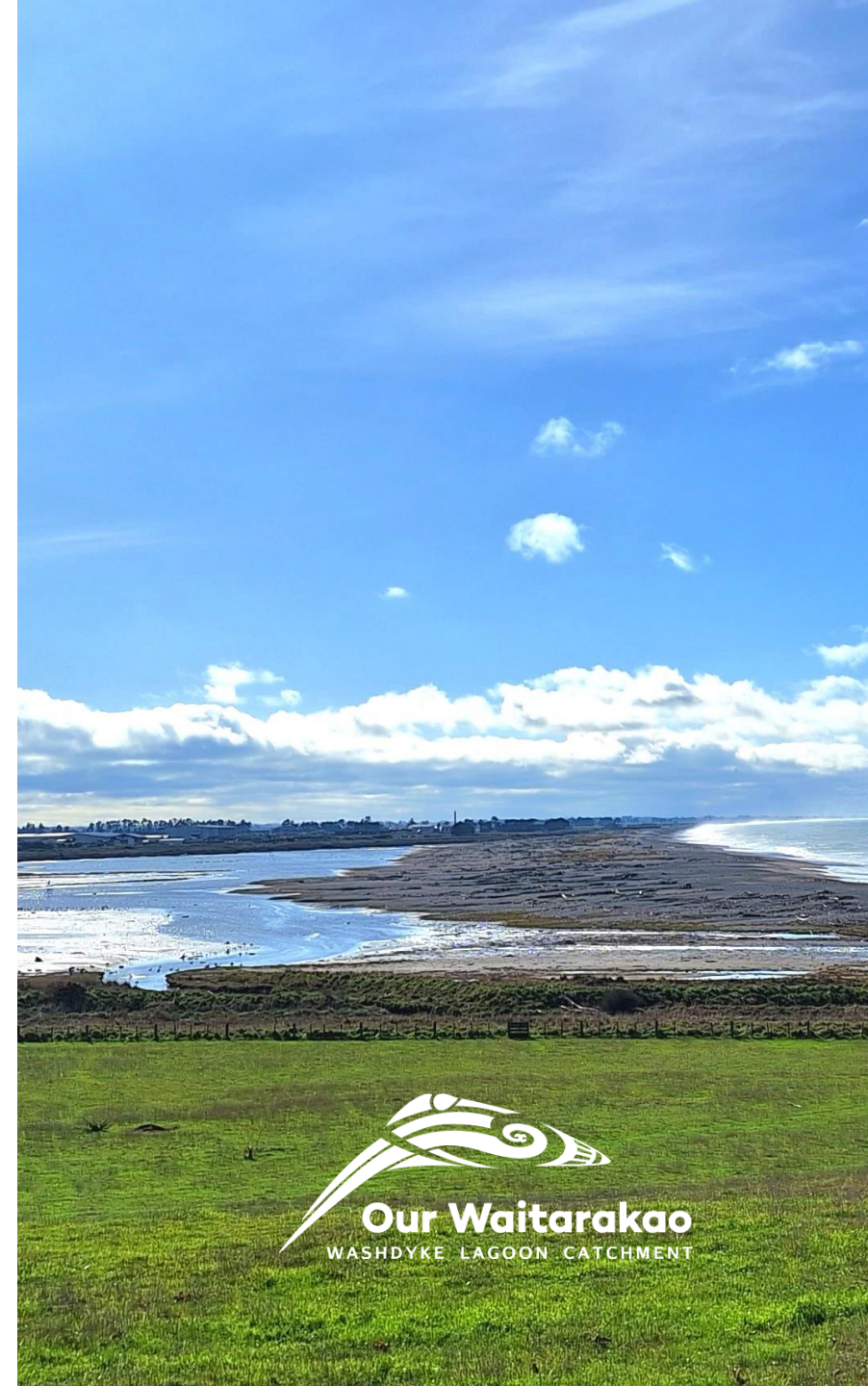
What kind of activities – the first years

Assist in the consultation and community engagement required for the next shift of the coastal stopbank and drain.

Ensure that the project above does not contradict or negatively affect strategy outcomes.

Ensure the project above includes actions that actively progress us toward strategy goals – e.g. nature of next Seadown Drain, Phillips Lagoon etc.

Work within inland stream landowners on flood attenuation and industry on stormwater absorption improvements.



Community feedback period

17 June to 15 July 2024

Our Waitarakao strategy document

Can be downloaded online at ourwaitarakao.co.nz or a hard copy can be collected from the locations listed below.

Community feedback survey

Complete the survey online or pick up a hard copy from:

- Timaru District Council
- Environment Canterbury
- South Canterbury Museum
- South Canterbury Eco Centre
- Timaru District Library

We are keen for
your feedback!



With your help
we've made a plan

Share your feedback



Community drop in events

Encourage community to read draft strategy and complete feedback survey

Discoveries in the catchment

Wednesday 26 June 5pm- 6.30pm, South Canterbury Eco Centre

Community drop-in

Tuesday 2 July 4pm- 6pm, The Grosvenor Hotel conference room

- Both events well attended
- Highly engaged, enthusiastic attendees
- New connections made and further offers of community involvement in future actions within catchment



Activities in the catchment



School visits to lagoon area

Craighead, Timaru Girls High

Roncalli and Mountainview in planning stage

Several primary schools and interest from others growing

University of Canterbury research project

Children's interactions with waterscapes

Fish survey and eDNA

Confirmation of banded kokopu, range of native species

Habitat restoration

Mudfish habitat restoration

Native vegetation restoration (initiating or underway)

Beach clean-up event (another to be planned)





Stay informed or get involved

We're looking into ways to keep the community informed on activities taking place in the catchment.

We want to provide opportunities to get involved and keep people updated on the progress taking place.

Knowing what options are available is key – whatever level of ambition. If we don't know what is out there we can't connect resources to possible actions.

We'll keep you posted as this develops.

